



Mount Pleasant Primary School Parent Newsletter Issue 46 - 22nd December 2023

Dear Parents / Carers,

I am delighted to share with you our latest school development, which has added so much fun and joy for all our children and indeed the staff, including myself!

Our Adventure Playground (adjacent to Victoria Road) is truly a magnificent addition to our school. Parents have been amazed with this excellent facility, which they have likened to a public playground. Parents have told us how proud they are of our school as no other school has such an amazing playground for their children to enjoy.

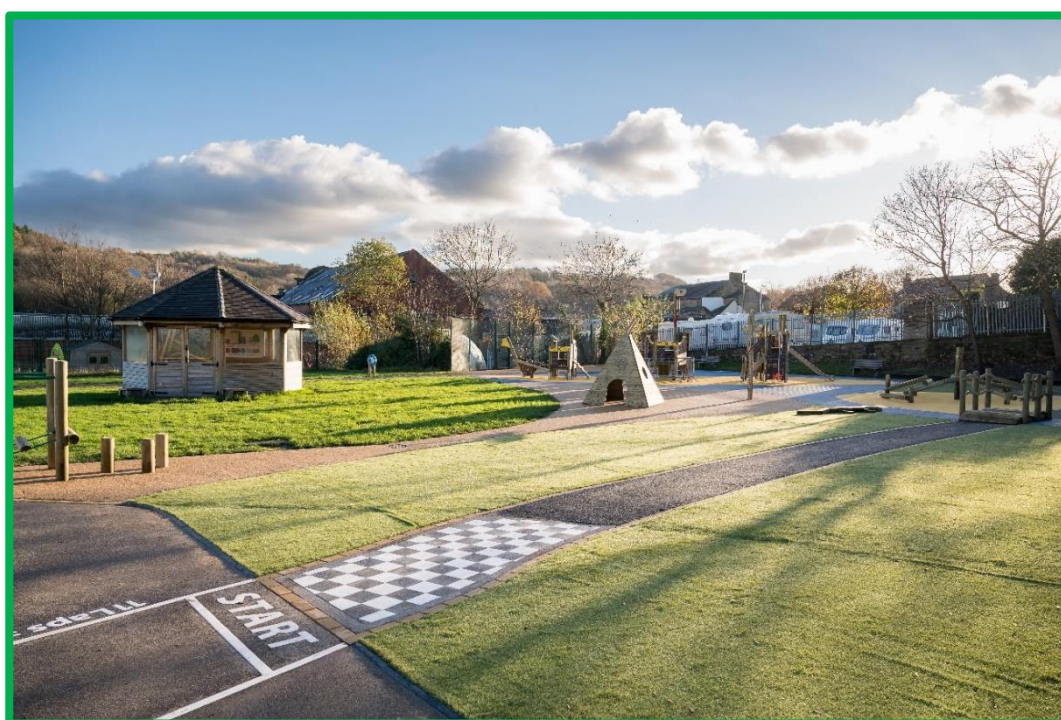


Thank you to all the parents who were able to attend the Opening Ceremony, as well as our two Parent Governors, Mrs Shafina Akthar and Mrs Rabia Kauser who also shared their delight with the playground. They told parents, 'Governors were keen to add facilities to this area of the school so that the children could enjoy and develop their physical skills. The school thought carefully about the choice of resources with many natural materials used.'

Children have been enjoying the Adventure Playground for a few weeks now, and I am so pleased with how they play very sensibly and safely together, using all parts of the playground. *'This is the best playground ever!'* is a common phrase we hear from many of our children. Please take a few minutes to enjoy the photos! Wishing everyone celebrating Christmas a wonderful time with family and friends. Happy New Year to everyone!

Yours faithfully

Mrs N Nazir - Headteacher









Outstanding Key Stage 2 SATS Results

Whilst we shared our KS2 amazing SATs results back in July, the official figures have now been released by the DfE. Once again, our children have attained higher than national for Combined Expected, and this year higher Greater Depth than nationally. Also, and in some respects more importantly, progress has been exceptional, scoring above average for Reading and Well Above Average for Writing and Maths.

Kirklees Primary School League Tables

I am extremely pleased to inform you that our children performed exceptionally well against other Kirklees schools for progress.

We are top of the league table for Writing Progress and 6th for Maths progress. Please see the data summary in the sections below.

[All schools and colleges in Kirklees - Compare school and college performance data in England - GOV.UK \(compare-school-performance.service.gov.uk\)](https://www.gov.uk/compare-school-performance)

Overall performance at end of key stage 2 in 2023 - all pupils ?

Showing 1 - 50 of 187 schools

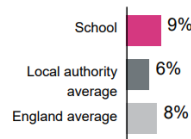
1 2 3 4 Next

School name	Type of school	Number of pupils at the end of key stage 2	% of pupils meeting expected standard	Progress score & description ?			% of pupils achieving at a higher standard ?	Average score in reading ?	Average score in maths ?
				Reading	Writing	Maths			
Mount Pleasant Primary School	Maintained school	88	66%	ABOVE AVERAGE 2.7 ?	WELL ABOVE AVERAGE 5.6 ?	WELL ABOVE AVERAGE 4.5 ?	9%	104	105
Linthwaite Ardron CofE (Voluntary Aided) Junior and Infant School	Maintained school	24	75%	WELL ABOVE AVERAGE 6.0 ?	WELL ABOVE AVERAGE 5.4 ?	WELL ABOVE AVERAGE 3.5 ?	8%	109	105
Millbridge, A Share Primary Academy	Academy	47	53%	AVERAGE 0.8 ?	WELL ABOVE AVERAGE 4.6 ?	WELL ABOVE AVERAGE 3.3 ?	11%	102	104

Pupils meeting expected standard in reading, writing and maths ?



Pupils achieving at a higher standard in reading, writing and maths ?



Memorable Experiences

Reception

Reception have had a very exciting half term. One morning when entering school we found footprints leading from our classrooms to the woodland. Like all good adventurers we put on our investigating gear and went to find out more. We followed the footprints into the Woodland Playground and found some clues from a visitor. We later had 3 special visits from our new friend the Gruffalo!



Well, the Gruffalo must have told his other fairytale friends how lovely the Reception children were, as 2 weeks later



another visitor had entered our classroom. We found ingredients and a floury letter from the Gingerbread Man!

He left us videos of his search in our classrooms, but we were unable to track him down.



This year the children took part in a new Christmas nativity called *'The Twinkly Nativity'*. They all worked very hard to learn 7 new songs with actions and some tricky lines. They gave four brilliant performances for all the other children and parents. Well done to them all!



Year 1



This half term Year 1 have been learning all about superheroes. We took part in 'Superhero Day' where we completed different activities such as an assault course; designing our own masks and shields; as well as decorating our own superhero vegetables! This is related to the books 'Supertato' and 'Traction Man'.

We had our very own superheroes in school!



Year 2



The children had a huge shock when a spaceship crashed into our Solar Dome area!

We spent the afternoon searching for clues and discussing what could have happened. We became space investigators and wrote our own explanations! It was so much fun.



Not only did we have to investigate the suspicious crash, the children also investigated and trialled how to eat, drink and go to the toilet in space! They had a great time and enjoyed their astronaut pudding!



Year 3

Year 3 took part in a SCARF workshop as part of their PSHE Curriculum. The children met Harold the Giraffe who is one of the characters in the stories we use for our learning.



We talked about how to keep our bodies and brains healthy and discussed a healthy lifestyle and being aware of our own mental health.



We talked about feelings, and how it is ok to have various feelings and how we could manage them. We then took a look inside one of our bodies! We looked at how the blood flows around the body, and saw how the skeleton protects the muscles. It was a brilliant morning.

Year 4

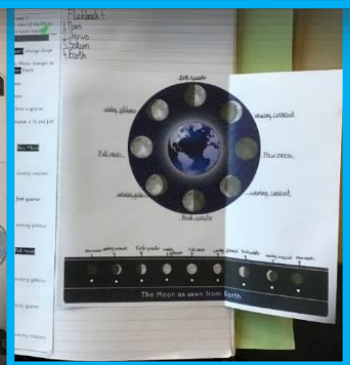
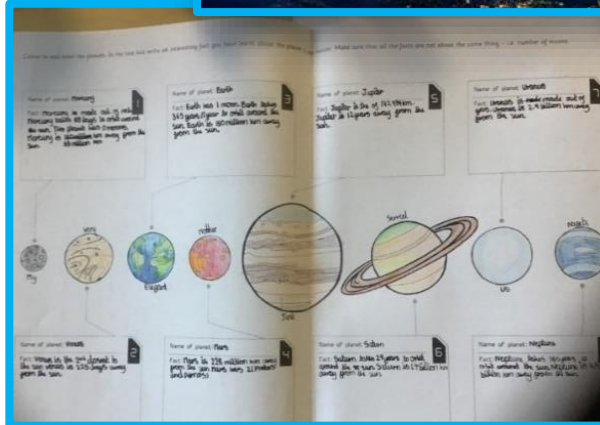


Year 4 have been looking at different styles of art this half term. They designed a figure then carved it out of soap using the clay tools.

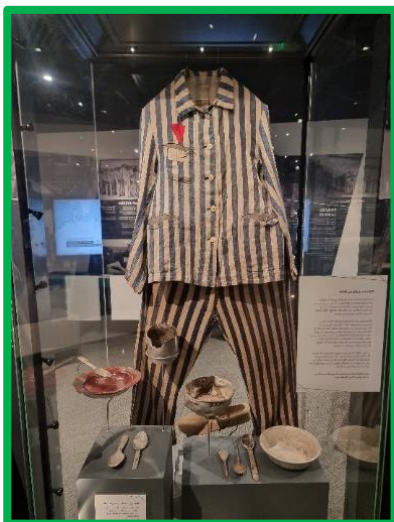
Year 5

For their memorable experience this half term, Year 5 were awe-struck with the mobile planetarium space show from Wonderdome! This immersive, inspiring planetarium show brought the wonders of space right in front of their eyes.

From the minute they stepped into the Wonderdome, the children were engaged and enthusiastic; they listened with interest to the presenter who shared his knowledge and passion for space science. Pupils were able to draw upon this knowledge within Science lessons and deepen their understanding of Earth and Space through further learning in class.



Year 6



Our topic this half term was the Battle of Britain and World War 2. To support our learning, we visited the Holocaust Exhibition at the Huddersfield University and found out about the people who were persecuted by the Nazis and about refugees. As historians, we considered the source materials we had been given to work out details about a child refugee, where they lived and why they came to England.



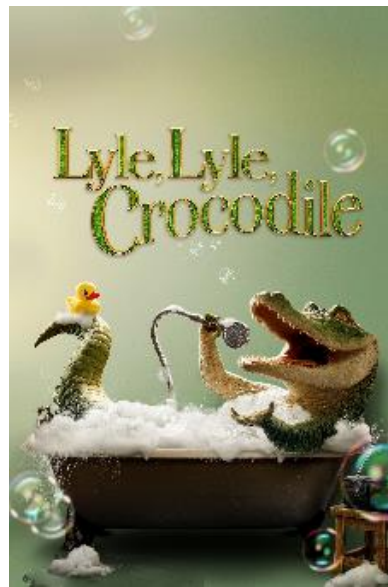
Nursery



This half term the children have read traditional tales. They have learnt about Goldilocks and the Three Bears and The Three Little Pigs. The children enjoyed taking part in a teddy bears' picnic where they completed lots of different activities. They were encouraged to talk about their special bear, make honey sandwiches, make bear biscuits, print bears onto paper and make a bear collage. We had a great day!



Cinema Trips



KS2 were really lucky to receive 90 free cinema tickets for the films: Super Mario; Lyle, Lyle Crocodile and Ruby Gilman.

It was very difficult to decide which children to take, therefore teachers nominated children who were demonstrating exceptional behaviour or who had 100% attendance. There were obviously more children than places available, so we made a random draw. These children had a wonderful time - for some it was their first visit to the cinema.



They represented our school impeccably and were a credit to themselves and their parents and carers. We hope to get more tickets in the future so we can take more well-deserving children on this exciting adventure.

Anti-bullying Week



We celebrated Anti-Bullying Week in school. Children came to school wearing odd socks as a reminder that it is ok to be different and that we should stand up together against bullying and discrimination. A range of different activities took place across school to highlight this issue and get us talking about what we should do if we see someone being bullied.

Sports

We've been energised and active at Mount Pleasant, having participated in a wide range of out-of-school events. We have taken part in football, dodgeball, hockey, athletics and many more sports across various schools, along with hosting a number of events. Well done to everyone who has taken part and thank you to parents who encourage the importance of promoting healthy lifestyle choices.



Attendance Rewards

Congratulations to all the 140 children who achieved a fantastic 100% attendance for the whole of the Autumn Term. That's 23% of the children in school. They all received a certificate and a reward in a special assembly. Well done to all those children, and a thank you to the parents for supporting them with their commitment to their education.



Term Dates Academic Year 2023 - 2024

Can parents please take note of the term times below and only book holidays in the school holiday periods.

Monday 8 th January	Children return to school for Spring Term.
Friday 9 th February	Last day in school. School closes for half term holiday.
Monday 19 th February	Children return to school.
Friday 22 nd March	Last day in school. School closes for Easter holidays.
Monday 8 th April	Children return to school for Summer Term.
Monday 6 th May	May Day Bank Holiday.
Friday 24 th May	Last day in school. School closes for half term holiday.
Monday 3 rd June	Children return to school.
Friday 17 th June	Staff INSET Day – children not in school.
Friday 19 th July	Last day in school. School closes for Summer holidays.



Mount Pleasant Term Time and Holidays 2024 - 2025

Autumn Half Term 1

- **Monday 2 September – (INSET Day)**
- **Tuesday 3 September – Children return to school**
- Thursday 24 October - School closes for October half term
- **Friday 25 October – (INSET Day)**

Autumn Half Term 2

- **Monday 4 November – Children return to school**
- Friday 20 December – School closes for Christmas holidays

Spring Half Term 1

- **Monday 6 January – Children return to school**
- Friday 14 February – School closes for February half term

Spring Half Term 2

- **Monday 24 February – Children return to school**
- **Monday 31 March – (INSET Day)**
- Friday 4 April – School closes for Easter holidays

Summer Half Term 1

- **Tuesday 22 April – Children return to school**
- **Monday 5 May – Bank Holiday**
- Friday 23 May – School closes for May half term holidays

Summer Half Term 2

- **Monday 2 June – Children return to school**
- Friday 18 July – School closes for the Summer holidays
- **Monday 21 July – (INSET Day)**
- **Tuesday 22 July – (INSET Day)**